



LANGE LIFT
PRODUCTS THAT LIFT THE WORLD



PRODUCT **MANUAL**



GENERAL TABLE INFORMATION

TABLE SETUP.....	1
TABLE MAINTENANCE.....	2

MANUAL LIFT TABLES

MANUAL LIFT TABLE SPECIFICATIONS.....	3
MANUAL LIFT TABLE OPERATION.....	4

AIR LIFT TABLES

AIR LIFT TABLE SPECIFICATIONS.....	5
AIR LIFT TABLE OPERATION.....	6
AIR LIFT TABLE POWER DIAGRAM.....	7

BATTERY LIFT TABLES

BATTERY LIFT TABLE SPECIFICATIONS.....	8
BATTERY LIFT TABLE OPERATION.....	9-10
BATTERY LIFT TABLE HYDRAULIC DIAGRAM.....	11
BATTERY LIFT TABLE CIRCUIT DIAGRAM.....	12

ELECTRIC LIFT TABLES

ELECTRIC LIFT TABLE SPECIFICATIONS.....	13
ELECTRIC LIFT TABLE OPERATION.....	14
ELECTRIC LIFT TABLE HYDRAULIC DIAGRAM.....	15
ELECTRIC LIFT TABLE CIRCUIT DIAGRAM.....	16

LANGE LIFT
PRODUCTS THAT LIFT THE WORLD





TABLE SETUP

TABLE SETUP

TABLE SETUP

THANK YOU FOR PURCHASING A **LANGE LIFT TABLE**. WE'RE HONORED TO HAVE YOU AS A CUSTOMER, AND THAT YOU'VE THOUGHT OF US FOR YOUR MATERIAL HANDLING NEEDS. IF YOU'VE NEVER USED A **LANGE LIFT TABLE** BEFORE, HERE IS SOME HELPFUL INFORMATION FOR AN UPLIFTING EXPERIENCE!

INSPECT THE FREIGHT DELIVERED BY THE FREIGHT CARRIER TO ENSURE THERE IS NO VISIBLE DAMAGE. IF ANY DAMAGE BY THE FREIGHT CARRIER IS PRESENT, THIS INFORMATION SHOULD BE NOTED ON THE BILL OF LADING, PHOTOS OF THE DAMAGE AND AN OVERALL PHOTO OF THE FREIGHT SHOULD BE TAKEN. BE SURE TO SAVE ALL PACKAGING UNTIL A FREIGHT CLAIM HAS BEEN INITIALIZED AND PROCESSED.

WARNING!

NEVER LIFT THE TABLE OFF OF THE PALLET BY THE DECK! THIS MAY CAUSE DAMAGE TO THE INTERNAL COMPONENTS OF THE LIFT.

NEVER EXCEED RATED CAPACITIES

REMOVING THE TABLE FROM THE PALLET

CAREFULLY UNDO THE TIE DOWN WIRE AROUND ALL FOUR CASTERS AND DISCARD.

USING A FORKLIFT, CAREFULLY POSITION THE FORKS TO PICK THE TABLE UP FROM THE BOTTOM OF THE LEGS, SAFELY AND EVENLY.

PRIOR TO DRIVING THE FORKLIFT FORKS UNDER THE LEGS, BE CAREFUL TO AVOID HYDRAULIC HOSES, ELECTRICAL CONDUIT, AND ANY VISIBLE COMPONENTS AFFIXED TO THE LIFT TABLE.

WE ARE NOT RESPONSIBLE FOR ANY DAMAGES INCURRED BY IMPROPER REMOVAL OF THE LIFT TABLE FROM THE PALLET. SHOULD YOU DAMAGE ANY COMPONENTS, WE WILL WORK WITH YOU TO WALK YOU THROUGH THE REPAIRS OR WITH REPLACEMENT PARTS.

WITH THE FORKS SAFELY UNDER THE LEGS OF THE TABLE, ENSURING STABILITY, SLOWLY RAISE THE FORKS UP TO CLEAR THE TABLE FROM THE PALLET, AND SLOWLY DRIVE THE LIFT TABLE AWAY FROM THE PALLET. ONCE CLEAR OF THE PALLET, GENTLY LOWER THE TABLE TO THE GROUND.

IF YOU HAVE A MANUAL LANGE LIFT TABLE, YOUR TABLE IS READY TO USE!

FOR USE OF POWERED LANGE LIFT TABLES IN AIR, BATTERY, OR ELECTRIC POWERED VARIETIES, PLEASE REFER TO THE SPECIFIC TABLE OPERATION TABLE PAGES IN THIS PRODUCT MANUAL FOR ADDITIONAL SETUP AND USAGE INFORMATION.

WARNING!

ALL **POWERED LIFT TABLES** ARE EQUIPPED WITH AN ADJUSTABLE FLOW CONTROL VALVE TO ADJUST THE LOWERING SPEEDS OF THE LIFT TABLE. A TABLE UNDER LOAD WILL LOWER MORE QUICKLY THAN A TABLE THAT IS NOT UNDER LOAD. YOU MUST ADJUST THE FLOW CONTROL VALVE TO A LEVEL THAT IS APPROPRIATE FOR THE SAFETY REQUIREMENTS OF YOUR ENVIRONMENT AND USAGE REQUIREMENTS.

1

LANGE LIFT
PRODUCTS THAT LIFT THE WORLD



LOCAL: 1 (262) 502-0333 | TOLL FREE: 1 (800) 558-0577 | EMAIL: SALES@LANGELIFT.COM

WWW.LANGELIFT.COM



TABLE MAINTENANCE

TABLE MAINTENANCE

TABLE MAINTENANCE

CASTER LUBRICATION: USING GENERAL MULTI-PURPOSE GREASE AND A GREASE GUN, LUBRICATE ALL GREASE POINTS AS NEEDED. LUBRICATION SCHEDULE WILL DEPEND ON THE CLEANLINESS OF YOUR WORKSPACE AND USAGE.

FLOOR LOCK LUBRICATION: LOCATE THE FRICTION POINTS AND APPLY A MODERATE AMOUNT OF STANDARD 30 WEIGHT OIL TO EACH POINT. WIPE AWAY ANY EXCESS OIL. LUBRICATE AS NEEDED. LUBRICATION SCHEDULE WILL DEPEND ON THE CLEANLINESS OF YOUR WORKSPACE AND USAGE.

GUIDE TUBE CLEANING: THE GUIDE TUBE IS SELF LUBRICATING. IT IS NORMAL TO SEE SOME HYDRAULIC OIL ON THE TUBE AND ON THE UPPER RING OF THE UPPER GUIDE TUBE BEARING. WIPE OFF ANY EXCESS OIL FROM THE UPPER GUIDE TUBE BEARING, LOCATED AT THE TOP OF THE PEDESTAL TUBE, AS NEEDED.

DO NOT CLEAN THE GUIDE TUBE UNLESS IT IS DIRTY. IF THE GUIDE TUBE IS DIRTY, REFER TO THE STEPS BELOW TO CLEAN IT.

WITH THE LIFT FULLY RAISED, APPLY A STANDARD DEGREASER TO THE GUIDE TUBE AND WIPE WITH A CLEAN, LINT FREE SHOP CLOTH TO KEEP THE INTERNAL COMPONENTS FREE OF DEBRIS. CLEAN AS NEEDED. REMEMBER, ONCE CLEANED AND AFTER A LIFT/LOWER CYCLE, HYDRAULIC OIL WILL BE PRESENT ON THE GUIDE TUBE ONCE AGAIN, WHICH IS NORMAL.

HYDRAULIC OIL: WE RECOMMEND ISO-46 HYDRAULIC OIL WITH A FILL LEVEL OF NO MORE THAN 2" ABOVE THE LOWER GUIDE TUBE BEARING. HYDRAULIC OIL INSIDE OF THE GUIDE TUBE WILL NOT BE VISIBLE WITHOUT REMOVING THE DECK FROM THE BASE OF THE TABLE. SHOULD YOU NEED TO REMOVE THE DECK, PLEASE REFER TO OUR **LANGE LIFT PARTS GUIDE**.

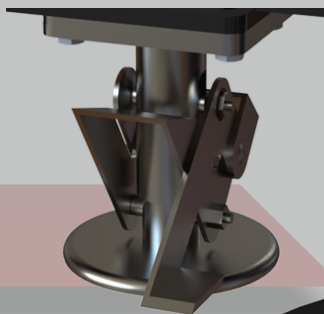
TABLE CAPACITY

1,000 LBS. - 1 QUART OF HYDRAULIC OIL
2,000 LBS. - 1 QUART OF HYDRAULIC OIL
3,000 LBS. - 1-1/2 QUARTS OF HYDRAULIC OIL
4,000 LBS. - 2 QUARTS OF HYDRAULIC OIL
5,000 LBS. - 2 QUARTS OF HYDRAULIC OIL

CASTERS



FLOOR LOCK



GUIDE TUBE



REFER TO THE INDIVIDUAL USAGE GUIDES IN THIS PRODUCT MANUAL FOR THE TYPE OF **LANGE LIFT TABLE** YOU OWN. THIS PRODUCT MANUAL CONTAINS SPECIFIC INFORMATION FOR MANUAL, AIR POWERED, BATTERY POWERED, AND ELECTRIC POWERED TABLES. THE MODEL NUMBER FOR YOUR TABLE IS LISTED ON THE PRODUCT CARD THAT WAS SHIPPED WITH YOUR LIFT TABLE AND ON THE LOWER LEFT LEG OF THE LIFT TABLE AS YOU ARE FACING THE FOOT PUMP OR CONTROLS, DEPENDING ON THE TYPE OF LIFT TABLE YOU HAVE.

IF YOU OWN A MODIFIED OR CUSTOM LANGE LIFT PRODUCT, PLEASE REFER TO THE MANUAL THAT WAS SHIPPED WITH YOUR LIFT, OR EMAILED TO YOUR PURCHASING AGENT. IF YOU NEED A COPY OF A MANUAL, PLEASE CALL OR EMAIL OUR SALES DEPARTMENT.



MANUAL LIFT TABLES

TECHNICAL SPECIFICATIONS

CAPACITIES: 1,000 TO 4,000 POUNDS

RAISED HEIGHT: 45"

LOWERED HEIGHT: 27"

VERTICAL TRAVEL: 18"

DECK: 1/4" THICK, FORMED & WELDED STEEL, 360° CONTINUOUS WITH DECK ROTATION LOCK

BASE: FORMED & WELDED STEEL LEGS, 2X CAST IRON SWIVEL CASTERS, 2X CAST IRON RIGID CASTERS, 1X INDUSTRIAL FOOT ACTUATED FLOOR LOCK

POWER: FOOT PUMP

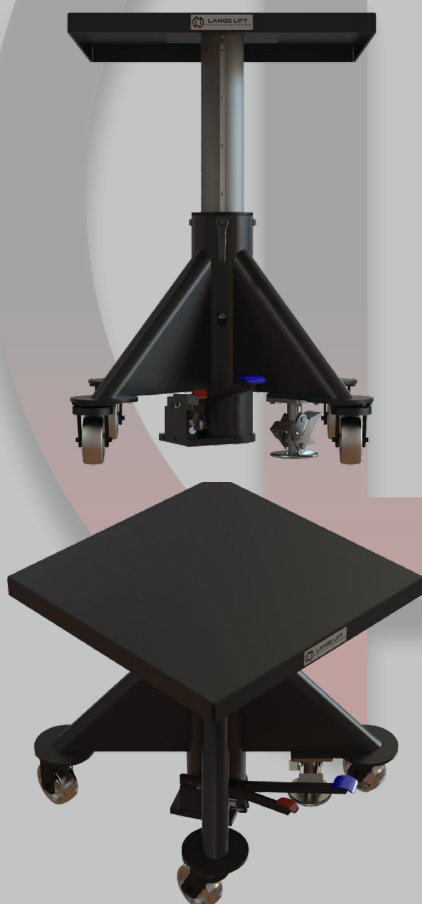
CONTROLS: FOOT PEDALS - LIFT/LOWER

PAINT COLOR: LANGE LIFT SHADOW GRAY

SPECIFICATIONS

WARNING!

NEVER EXCEED RATED CAPACITIES



MANUAL LIFT TABLE MODELS

MODEL	CAPACITY	DECK & BASE SIZE
L-124	1,000 LBS.	24" SQUARE
L-130	1,000 LBS.	30" SQUARE
L-136	1,000 LBS.	36" SQUARE
L-148	1,000 LBS.	48" SQUARE
L-224	2,000 LBS.	24" SQUARE
L-230	2,000 LBS.	30" SQUARE
L-236	2,000 LBS.	36" SQUARE
L-248	2,000 LBS.	48" SQUARE
L-324	3,000 LBS.	24" SQUARE
L-330	3,000 LBS.	30" SQUARE
L-336	3,000 LBS.	36" SQUARE
L-348	3,000 LBS.	48" SQUARE
L-424	4,000 LBS.	24" SQUARE
L-430	4,000 LBS.	30" SQUARE
L-436	4,000 LBS.	36" SQUARE
L-448	4,000 LBS.	48" SQUARE

3

LANGE LIFT

PRODUCTS THAT LIFT THE WORLD



LOCAL: 1 (262) 502-0333 | TOLL FREE: 1 (800) 558-0577 | EMAIL: SALES@LANGELIFT.COM

WWW.LANGELIFT.COM



MANUAL LIFT TABLES

MANUAL TABLE OPERATION

LIFTING: PUSH DOWN THE LIFT PEDAL. EACH COMPLETE PUMP OF THE PEDAL WILL RAISE THE LIFT TABLE UNTIL THE DECK HAS REACHED ITS MAXIMUM RAISED HEIGHT OF 45" FROM THE TOP OF THE DECK TO THE FLOOR. THERE IS A BUILT IN BLEEDING MECHANISM SO THAT OVER PUMPING WILL NOT DAMAGE THE TABLE AND ALLOW IT TO SETTLE AT 45".

LOWERING: PUSH AND HOLD DOWN THE LOWER PEDAL. THE LIFT TABLE WILL LOWER UNTIL THE DECK HAS REACHED ITS MINIMUM LOWERED HEIGHT OF 27" OR THE PEDAL IS RELEASED. CAUTION! A LIFT TABLE UNDER LOAD WILL LOWER MORE QUICKLY. ALWAYS USE PROPER SAFETY PRECAUTIONS REQUIRED BY YOUR ENVIRONMENT.

DECK ROTATION: LOOSEN THE LOCK HANDLE UNDER THE DECK AND ROTATE THE DECK 360° DEGREES IN EITHER DIRECTION AT ANY HEIGHT. TIGHTEN THE LOCK HANDLE TO LOCK IT IN PLACE. SOME MOVEMENT IS INTENDED TO PROTECT THE BEARING. **CAUTION!** DO NOT OVER-TIGHTEN. POSITION THE LOCK HANDLE ARM TOWARDS THE FLOOR TO PREVENT POSSIBLE DAMAGE.

FLOOR LOCK: ENSURE THE TABLE IS ON A FLAT SURFACE AND FREE OF DEBRIS SO THE FLOOR LOCK CAN MAKE FULL CONTACT WITH THE FLOOR. USING YOUR FOOT, PUSH DOWN ON THE LARGE PEDAL UNTIL IT LOCKS. TO RELEASE, PRESS UP ON THE SMALL PEDAL UNTIL THE LARGE PEDAL SNAPS UP.

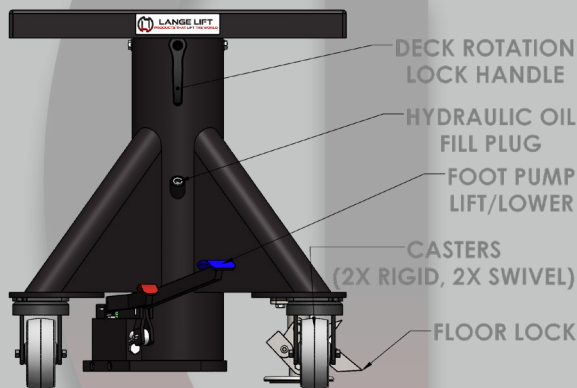


TABLE OPERATION

4

LANGE LIFT
PRODUCTS THAT LIFT THE WORLD



LOCAL: 1 (262) 502-0333 | TOLL FREE: 1 (800) 558-0577 | EMAIL: SALES@LANGELIFT.COM

WWW.LANGELIFT.COM



AIR LIFT TABLES

TECHNICAL SPECIFICATIONS

CAPACITIES: 1,000 TO 5,000 POUNDS

RAISED HEIGHT: 45"

LOWERED HEIGHT: 27"

VERTICAL TRAVEL: 18"

DECK: 1/4" THICK, FORMED & WELDED STEEL, 360° CONTINUOUS WITH DECK ROTATION LOCK

BASE: FORMED & WELDED STEEL LEGS, 2X CAST IRON SWIVEL CASTERS, 2X CAST IRON RIGID CASTERS, 1X INDUSTRIAL FOOT ACTUATED FLOOR LOCK

POWER: AIR MOTOR - 80 PSI @ 50 CFM (RECOMMENDED), AIR REGULATOR, FILTER, AND LUBRICATOR

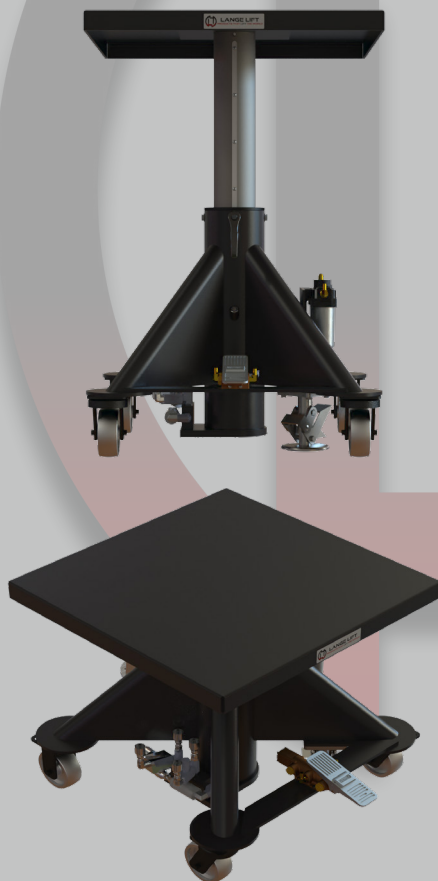
CONTROLS: AIR VALVE PEDAL - LIFT/LOWER, ADJUSTABLE FLOW CONTROL VALVE.

PAINT COLOR: LANGE LIFT SHADOW GRAY

SPECIFICATIONS

WARNING!

NEVER EXCEED RATED CAPACITIES



AIR LIFT TABLE MODELS

MODEL	CAPACITY	DECK & BASE SIZE
L-124-AP	1,000 LBS.	24" SQUARE
L-130-AP	1,000 LBS.	30" SQUARE
L-136-AP	1,000 LBS.	36" SQUARE
L-148-AP	1,000 LBS.	48" SQUARE
L-224-AP	2,000 LBS.	24" SQUARE
L-230-AP	2,000 LBS.	30" SQUARE
L-236-AP	2,000 LBS.	36" SQUARE
L-248-AP	2,000 LBS.	48" SQUARE
L-324-AP	3,000 LBS.	24" SQUARE
L-330-AP	3,000 LBS.	30" SQUARE
L-336-AP	3,000 LBS.	36" SQUARE
L-348-AP	3,000 LBS.	48" SQUARE
L-424-AP	4,000 LBS.	24" SQUARE
L-430-AP	4,000 LBS.	30" SQUARE
L-436-AP	4,000 LBS.	36" SQUARE
L-448-AP	4,000 LBS.	48" SQUARE
L-524-AP	5,000 LBS.	24" SQUARE
L-530-AP	5,000 LBS.	30" SQUARE
L-536-AP	5,000 LBS.	36" SQUARE
L-548-AP	5,000 LBS.	48" SQUARE

5

LANGE LIFT
PRODUCTS THAT LIFT THE WORLD



LOCAL: 1 (262) 502-0333 | TOLL FREE: 1 (800) 558-0577 | EMAIL: SALES@LANGELIFT.COM

WWW.LANGELIFT.COM



AIR LIFT TABLES

AIR TABLE OPERATION

POWERING: CONNECT THE LIFT TO AN AIR SOURCE WITH A RECOMMENDED AIR OUTPUT OF 80 PSI @ 50 CFM.

LIFTING: TILT BACK AND HOLD DOWN THE AIR VALVE PEDAL UNTIL THE DECK HAS REACHED ITS MAXIMUM RAISED HEIGHT OF 45" FROM THE TOP OF THE DECK TO THE FLOOR. THERE IS A BUILT IN BLEEDING MECHANISM SO THAT OVER PUMPING WILL NOT DAMAGE THE TABLE AND ALLOW IT TO SETTLE AT 45".

FLOW CONTROL: A TABLE UNDER LOAD WILL LOWER MORE QUICKLY THAN A TABLE THAT IS NOT UNDER LOAD. YOU MUST ADJUST THE FLOW CONTROL VALVE TO A LEVEL THAT IS APPROPRIATE FOR THE SAFETY REQUIREMENTS OF YOUR ENVIRONMENT AND USAGE REQUIREMENTS.

LOWERING: TILT FORWARD AND HOLD DOWN THE AIR VALVE PEDAL. THE LIFT TABLE WILL LOWER UNTIL THE DECK HAS REACHED ITS MINIMUM LOWERED HEIGHT OF 27" OR THE PEDAL IS RELEASED.

CAUTION! A LIFT TABLE UNDER LOAD WILL LOWER MORE QUICKLY. ALWAYS USE PROPER SAFETY PRECAUTIONS REQUIRED BY YOUR ENVIRONMENT AND ADJUST THE FLOW CONTROL ACCORDINGLY.

DECK ROTATION: LOOSEN THE LOCK HANDLE UNDER THE DECK AND ROTATE THE DECK 360° DEGREES IN EITHER DIRECTION AT ANY HEIGHT. TIGHTEN THE LOCK HANDLE TO LOCK IT IN PLACE. SOME MOVEMENT IS INTENDED TO PROTECT THE BEARING. **CAUTION!** DO NOT OVER-TIGHTEN. POSITION THE LOCK HANDLE ARM TOWARDS THE FLOOR TO PREVENT POSSIBLE DAMAGE.

FLOOR LOCK: ENSURE THE TABLE IS ON A FLAT SURFACE AND FREE OF DEBRIS SO THE FLOOR LOCK CAN MAKE FULL CONTACT WITH THE FLOOR. USING YOUR FOOT, PUSH DOWN ON THE LARGE PEDAL UNTIL IT LOCKS. TO RELEASE, PRESS UP ON THE SMALL PEDAL UNTIL THE LARGE PEDAL SNAPS UP.



TABLE OPERATION

6

LANGE LIFT
PRODUCTS THAT LIFT THE WORLD

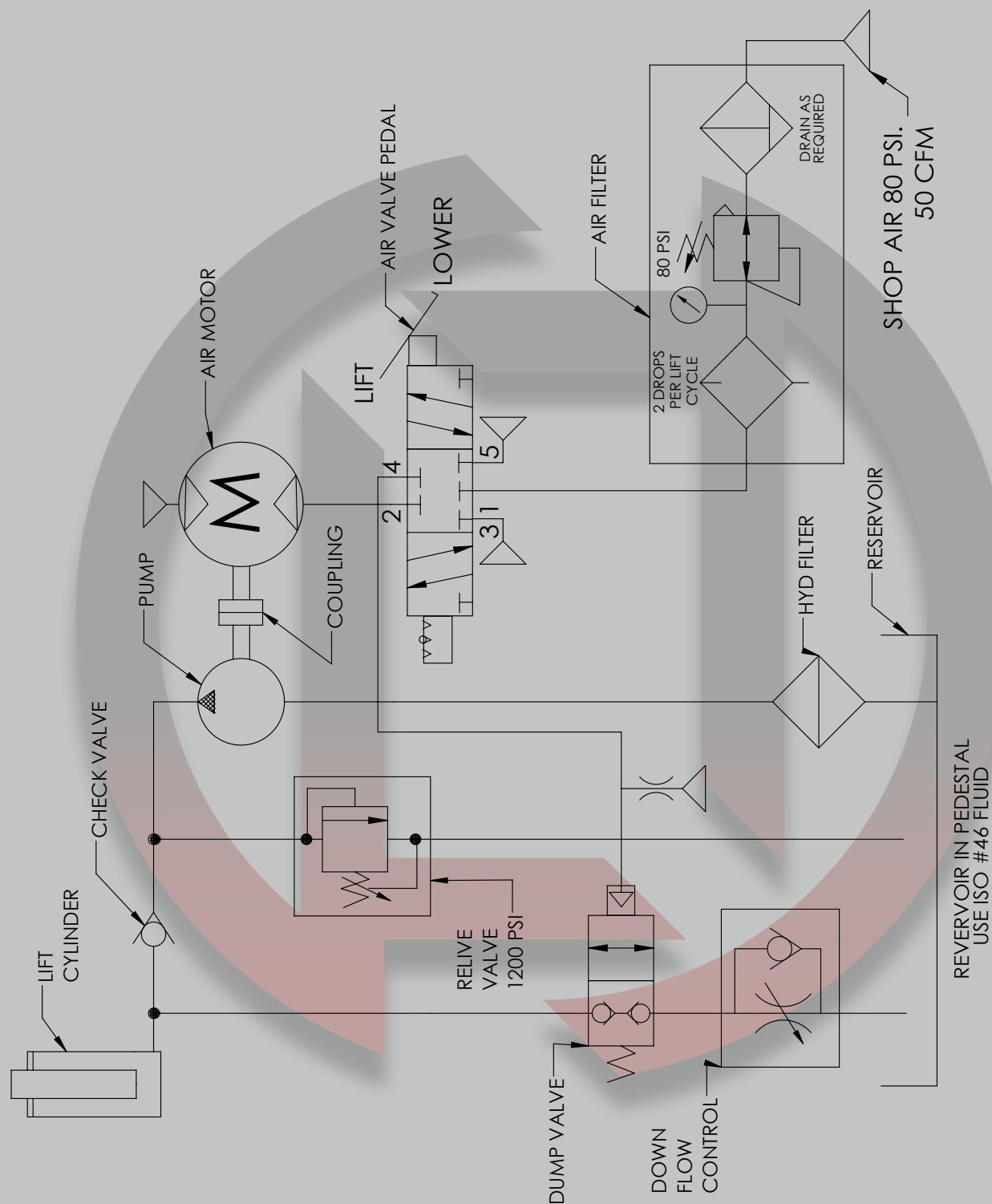


LOCAL: 1 (262) 502-0333 | TOLL FREE: 1 (800) 558-0577 | EMAIL: SALES@LANGELIFT.COM

WWW.LANGELIFT.COM



POWER DIAGRAM



AIR POWERED LIFT TABLE - CIRCUIT DIAGRAM v1

7

LANGE LIFT

PRODUCTS THAT LIFT THE WORLD





BATTERY LIFT TABLES

TECHNICAL SPECIFICATIONS

CAPACITIES: 1,000 TO 5,000 POUNDS

RAISED HEIGHT: 45"

LOWERED HEIGHT: 27"

VERTICAL TRAVEL: 18"

DECK: 1/4" THICK, FORMED & WELDED STEEL, 360° CONTINUOUS WITH DECK ROTATION LOCK

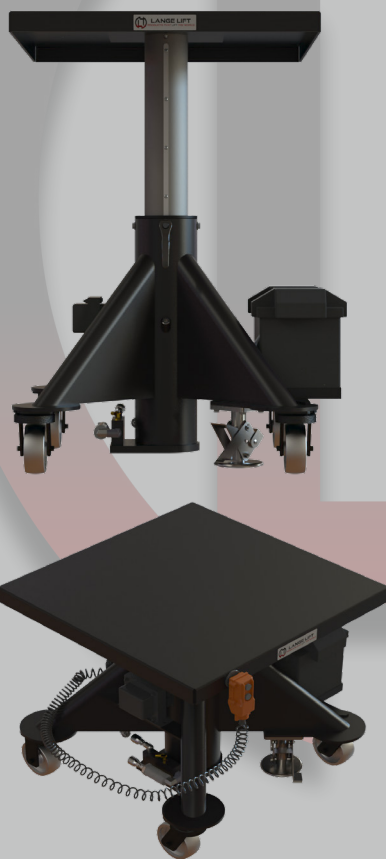
BASE: FORMED & WELDED STEEL LEGS, 2X CAST IRON SWIVEL CASTERS, 2X CAST IRON RIGID CASTERS, 1X INDUSTRIAL FOOT ACTUATED FLOOR LOCK

POWER: 12 VOLT DEEP CYCLE BATTERY (ENCLOSED), DC MOTOR, AND ON BOARD BATTERY CHARGER
CONTROLS: PUSH BUTTON COIL CORDED PENDANT - LIFT/LOWER, ADJUSTABLE FLOW CONTROL VALVE.

PAINT COLOR: LANGE LIFT SHADOW GRAY

WARNING!

NEVER EXCEED RATED CAPACITIES



BATTERY LIFT TABLE MODELS

MODEL	CAPACITY	DECK & BASE SIZE
L-124-BP	1,000 LBS.	24" SQUARE
L-130-BP	1,000 LBS.	30" SQUARE
L-136-BP	1,000 LBS.	36" SQUARE
L-148-BP	1,000 LBS.	48" SQUARE
L-224-BP	2,000 LBS.	24" SQUARE
L-230-BP	2,000 LBS.	30" SQUARE
L-236-BP	2,000 LBS.	36" SQUARE
L-248-BP	2,000 LBS.	48" SQUARE
L-324-BP	3,000 LBS.	24" SQUARE
L-330-BP	3,000 LBS.	30" SQUARE
L-336-BP	3,000 LBS.	36" SQUARE
L-348-BP	3,000 LBS.	48" SQUARE
L-424-BP	4,000 LBS.	24" SQUARE
L-430-BP	4,000 LBS.	30" SQUARE
L-436-BP	4,000 LBS.	36" SQUARE
L-448-BP	4,000 LBS.	48" SQUARE
L-524-BP	5,000 LBS.	24" SQUARE
L-530-BP	5,000 LBS.	30" SQUARE
L-536-BP	5,000 LBS.	36" SQUARE
L-548-BP	5,000 LBS.	48" SQUARE



BATTERY LIFT TABLES

TABLE OPERATION

BATTERY TABLE OPERATION

BATTERY: TO PREVENT ACCIDENTAL OPERATION IN TRANSIT, ALL BATTERY POWERED TABLES ARE SHIPPED WITH THE BATTERY CABLES DISCONNECTED.

CHARGING THE BATTERY: CHARGE THE BATTERY IN A WELL VENTILATED AREA, AWAY FROM OPEN FLAMES OR SPARKS.

CONNECT THE BATTERY CHARGER'S PLUG TO A 120V AC GROUNDED ELECTRICAL OUTLET. NORMAL CHARGE TIME IS 8-10 HOURS. LAMPS ON THE CHARGER INDICATE THE CONDITION OF THE BATTERY. CHARGING WILL STOP AUTOMATICALLY WHEN THE BATTERY IS FULLY CHARGED, INDICATED BY THE LAMP ON THE CHARGER. SAFELY REMOVE THE PLUG FROM THE OUTLET AND STOW THE CORD.

PLEASE CALL OR EMAIL TO REQUEST ADDITIONAL INFORMATION ON THE BATTERY CHARGER.

LIFTING: PUSH AND HOLD DOWN THE LIFT BUTTON ON THE COIL CORD PENDANT UNTIL THE DECK HAS REACHED ITS MAXIMUM RAISED HEIGHT OF 45" FROM THE TOP OF THE DECK TO THE FLOOR. THERE IS A BUILT IN BLEEDING MECHANISM SO THAT OVER PUMPING WILL NOT DAMAGE THE TABLE AND ALLOW IT TO SETTLE AT 45".

FLOW CONTROL: A TABLE UNDER LOAD WILL LOWER MORE QUICKLY THAN A TABLE THAT IS NOT UNDER LOAD. YOU MUST ADJUST THE FLOW CONTROL VALVE TO A LEVEL THAT IS APPROPRIATE FOR THE SAFETY REQUIREMENTS OF YOUR ENVIRONMENT AND USAGE REQUIREMENTS.

LOWERING: PUSH AND HOLD DOWN THE LOWER BUTTON ON THE COIL CORD PENDANT. THE LIFT TABLE WILL LOWER UNTIL THE DECK HAS REACHED ITS MINIMUM LOWERED HEIGHT OF 27" OR THE PEDAL IS RELEASED. **CAUTION!** A LIFT TABLE UNDER LOAD WILL LOWER MORE QUICKLY. ALWAYS USE PROPER SAFETY PRECAUTIONS REQUIRED BY YOUR ENVIRONMENT AND ADJUST THE FLOW CONTROL ACCORDINGLY.

DECK ROTATION: LOOSEN THE LOCK HANDLE UNDER THE DECK AND ROTATE THE DECK 360° DEGREES IN EITHER DIRECTION AT ANY HEIGHT. TIGHTEN THE LOCK HANDLE TO LOCK IT IN PLACE. SOME MOVEMENT IS INTENDED TO PROTECT THE BEARING. **CAUTION!** DO NOT OVER-TIGHTEN. POSITION THE LOCK HANDLE ARM TOWARDS THE FLOOR TO PREVENT POSSIBLE DAMAGE.

FLOOR LOCK: ENSURE THE TABLE IS ON A FLAT SURFACE AND FREE OF DEBRIS SO THE FLOOR LOCK CAN MAKE FULL CONTACT WITH THE FLOOR. USING YOUR FOOT, PUSH DOWN ON THE LARGE PEDAL UNTIL IT LOCKS. TO RELEASE, PRESS UP ON THE SMALL PEDAL UNTIL THE LARGE PEDAL SNAPS UP.

BATTERY MAINTENANCE: OBSERVE THE FOLLOWING BATTERY CYCLE MAINTENANCE PROCEDURES TO OBTAIN GOOD PERFORMANCE AND MAXIMUM CYCLE LIFE.

1. ALWAYS OBSERVE THE FOLLOWING PERSONAL SAFETY PRECAUTIONS WHEN WORKING WITH LEAD ACID BATTERIES:

- A. SOMEONE SHOULD BE WITHIN RANGE OF YOUR VOICE AND CLOSE ENOUGH TO COME TO YOUR AID WHEN YOU WORK NEAR A BATTERY.
- B. HAVE PLENTY OF FRESH WATER AND SOAP NEARBY IN CASE BATTERY ACID CONTACTS SKIN, CLOTHING, OR EYES.
- C. WEAR COMPLETE EYE AND CLOTHING PROTECTION. AVOID TOUCHING EYES WHILE WORKING NEAR BATTERY.
- D. IF BATTERY ACID CONTACTS SKIN OR CLOTHING, WASH IMMEDIATELY WITH SOAP AND WATER. IF ACID ENTERS EYE, IMMEDIATELY FLUSH EYE WITH RUNNING COLD WATER FOR AT LEAST TEN MINUTES AND SEEK MEDICAL ATTENTION.



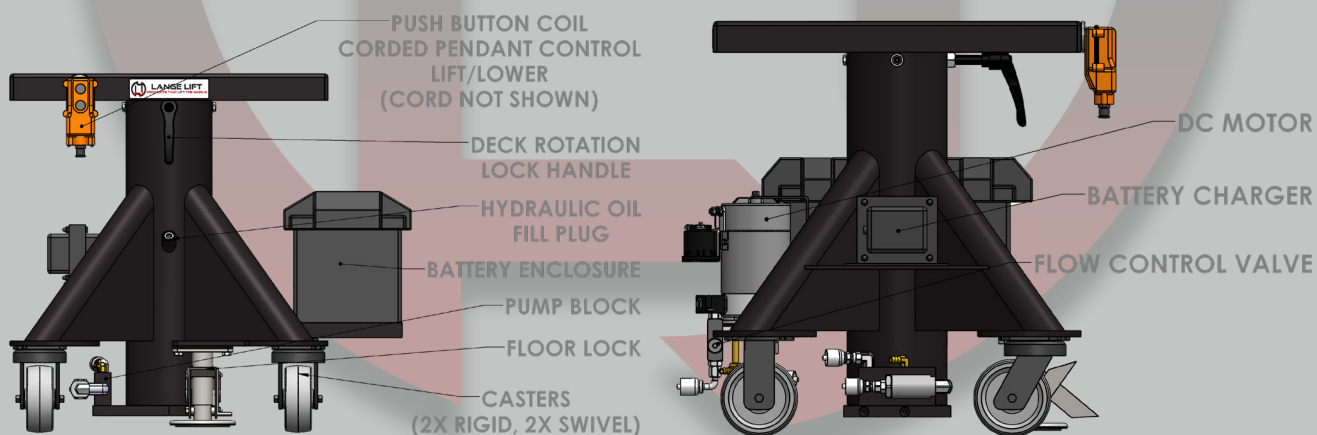
BATTERY LIFT TABLES

BATTERY TABLE OPERATION

BATTERY MAINTENANCE (CONTINUED):

- E. NEVER SMOKE, ALLOW SPARK, OR FLAME IN THE VICINITY OF THE BATTERY.**
- F. BE EXTRA CAUTIOUS TO REDUCE RISK OF DROPPING A METAL TOOL ONTO THE BATTERY TERMINALS. IT MIGHT SPARK OR SHORT-CIRCUIT THE BATTERY.**
- G. NEVER CHARGE A FROZEN BATTERY.**
- 2. NEW BATTERIES ARE NOT CAPABLE OF THEIR RATED OUTPUT UNTIL THEY HAVE BEEN DISCHARGED A NUMBER OF TIMES. WE SUGGEST LIMITING THEIR USE EARLY ON.**
- 3. DO NOT EXCESSIVELY DISCHARGE BATTERIES. EXCESSIVE DISCHARGE CAN CAUSE POLARITY REVERSAL OF INDIVIDUAL CELLS RESULTING IN COMPLETE FAILURE SHORTLY THEREAFTER. LIMITED USE OF NEW BATTERIES WILL MINIMIZE THE CHANCE OF CELL REVERSAL.**
- 4. CHECK THE LEVEL OF ELECTROLYTES IN CONVENTIONAL LEAD ACID BATTERIES MONTHLY. MAINTAIN THE PROPER ELECTROLYTE LEVEL BY ADDING DISTILLED OR PURIFIED WATER WHEN NECESSARY. ELECTROLYTE LEVELS LOWER DURING DISCHARGING AND RISE DURING CHARGING, THEREFORE IT IS MANDATORY THAT WATER BE ADDED TO THE CELLS ONLY WHEN THEY ARE FULLY CHARGED; DO NOT OVERFILL. OLD BATTERIES REQUIRE MORE FREQUENT ADDITIONS OF WATER THAN NEW BATTERIES.**
- 5. KEEP TOPS OF BATTERIES CLEAN AND DRY TO PREVENT EXCESSIVE SELF-DISCHARGE. KEEP BATTERY TERMINALS REASONABLY TIGHT.**

TABLE OPERATION

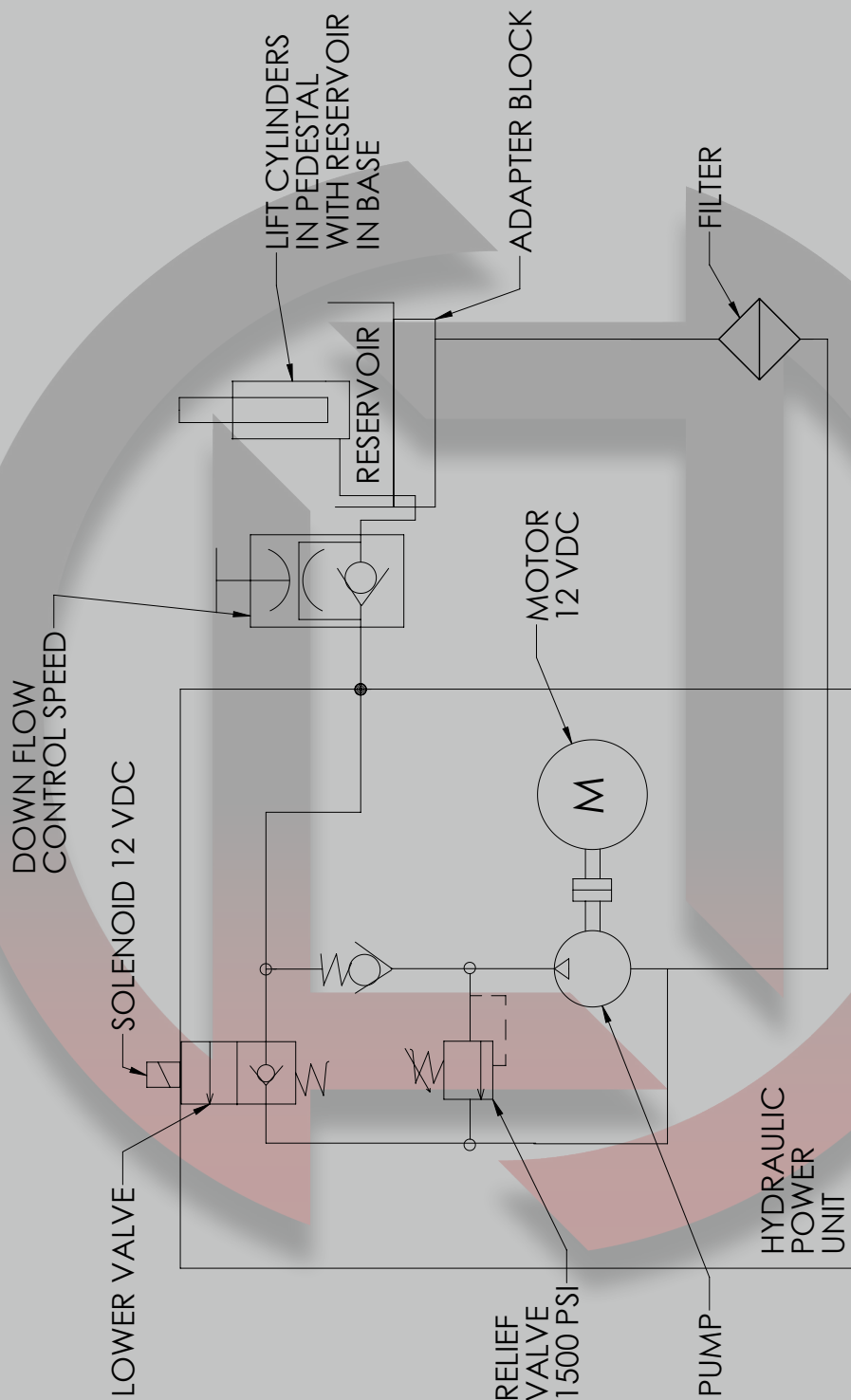




BATTERY LIFT TABLES

BATTERY TABLE HYDRAULICS

HYDRAULIC DIAGRAM



BATTERY POWERED LIFT TABLE - HYDRAULIC DIAGRAM v1

11

LANGE LIFT

PRODUCTS THAT LIFT THE WORLD



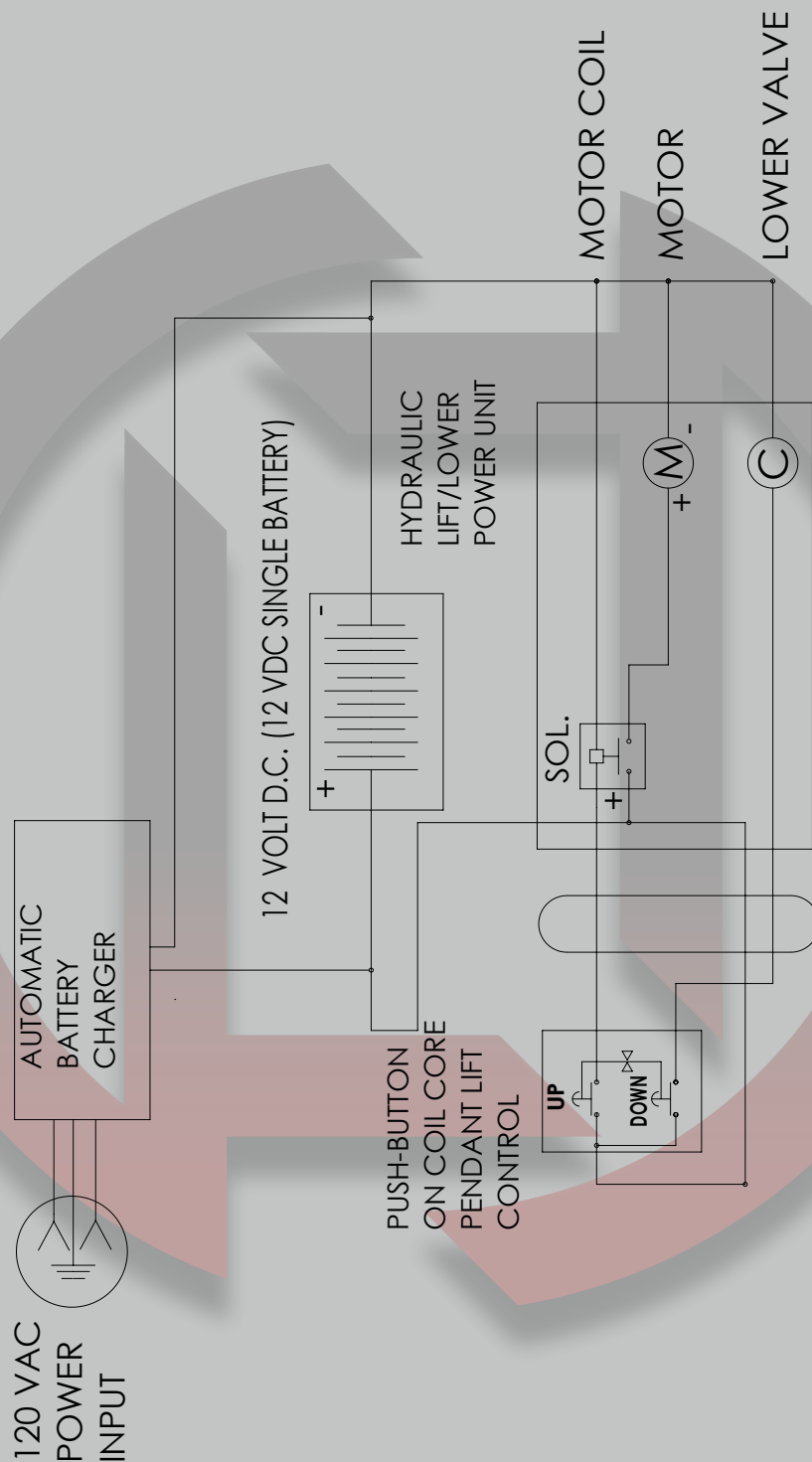
LOCAL: 1 (262) 502-0333 | TOLL FREE: 1 (800) 558-0577 | EMAIL: SALES@LANGELIFT.COM

WWW.LANGELIFT.COM



BATTERY LIFT TABLES

BATTERY TABLE CIRCUITRY



BATTERY POWERED LIFT TABLE - CIRCUIT DIAGRAM v1

CIRCUIT DIAGRAM

12

LANGE LIFT
PRODUCTS THAT LIFT THE WORLD



LOCAL: 1 (262) 502-0333 | TOLL FREE: 1 (800) 558-0577 | EMAIL: SALES@LANGELIFT.COM

WWW.LANGELIFT.COM



ELECTRIC LIFT TABLES

TECHNICAL SPECIFICATIONS

CAPACITIES: 1,000 TO 5,000 POUNDS

RAISED HEIGHT: 45"

LOWERED HEIGHT: 27"

VERTICAL TRAVEL: 18"

DECK: 1/4" THICK, FORMED & WELDED STEEL, 360° CONTINUOUS WITH DECK ROTATION LOCK

BASE: FORMED & WELDED STEEL LEGS, 2X CAST IRON SWIVEL CASTERS, 2X CAST IRON RIGID CASTERS, 1X INDUSTRIAL FOOT ACTUATED FLOOR LOCK

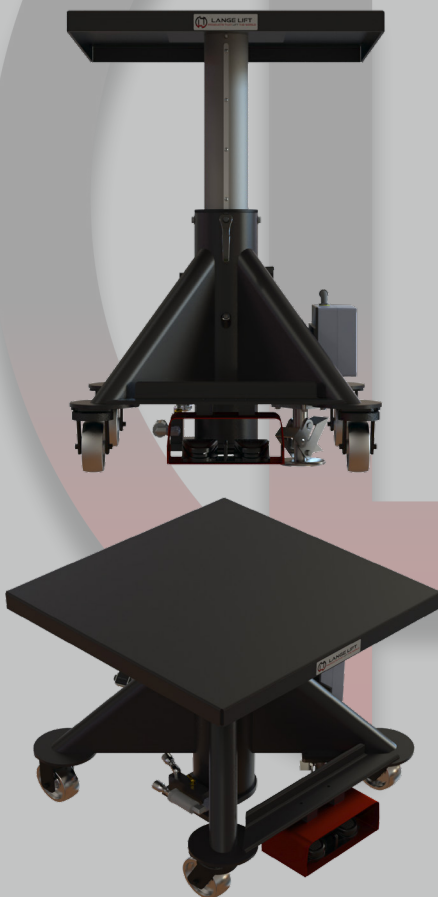
POWER: 120 VOLT AC ELECTRIC OVER HYDRAULIC MOTOR

CONTROLS: DUAL GUARDED FOOT SWITCH - LIFT/LOWER, ADJUSTABLE FLOW CONTROL VALVE

PAINT COLOR: LANGE LIFT SHADOW GRAY

WARNING!

NEVER EXCEED RATED CAPACITIES



ELECTRIC LIFT TABLE MODELS

MODEL	CAPACITY	DECK & BASE SIZE
L-124-EP	1,000 LBS.	24" SQUARE
L-130-EP	1,000 LBS.	30" SQUARE
L-136-EP	1,000 LBS.	36" SQUARE
L-148-EP	1,000 LBS.	48" SQUARE
L-224-EP	2,000 LBS.	24" SQUARE
L-230-EP	2,000 LBS.	30" SQUARE
L-236-EP	2,000 LBS.	36" SQUARE
L-248-EP	2,000 LBS.	48" SQUARE
L-324-EP	3,000 LBS.	24" SQUARE
L-330-EP	3,000 LBS.	30" SQUARE
L-336-EP	3,000 LBS.	36" SQUARE
L-348-EP	3,000 LBS.	48" SQUARE
L-424-EP	4,000 LBS.	24" SQUARE
L-430-EP	4,000 LBS.	30" SQUARE
L-436-EP	4,000 LBS.	36" SQUARE
L-448-EP	4,000 LBS.	48" SQUARE
L-524-EP	5,000 LBS.	24" SQUARE
L-530-EP	5,000 LBS.	30" SQUARE
L-536-EP	5,000 LBS.	36" SQUARE
L-548-EP	5,000 LBS.	48" SQUARE

SPECIFICATIONS



ELECTRIC LIFT TABLES

ELECTRIC TABLE OPERATION

POWER: FROM THE ELECTRICAL BOX, CONNECT TO A 120V AC OUTLET WITH AN INDUSTRIAL GRADE EXTENSION CORD.

LIFTING: PUSH AND HOLD DOWN THE LIFT PEDAL SWITCH UNTIL THE DECK HAS REACHED ITS MAXIMUM RAISED HEIGHT OF 45" FROM THE TOP OF THE DECK TO THE FLOOR. THERE IS A BUILT IN BLEEDING MECHANISM SO THAT OVER PUMPING WILL NOT DAMAGE THE TABLE AND ALLOW IT TO SETTLE AT 45".

FLOW CONTROL: A TABLE UNDER LOAD WILL LOWER MORE QUICKLY THAN A TABLE THAT IS NOT UNDER LOAD. YOU MUST ADJUST THE FLOW CONTROL VALVE TO A LEVEL THAT IS APPROPRIATE FOR THE SAFETY REQUIREMENTS OF YOUR ENVIRONMENT AND USAGE REQUIREMENTS.

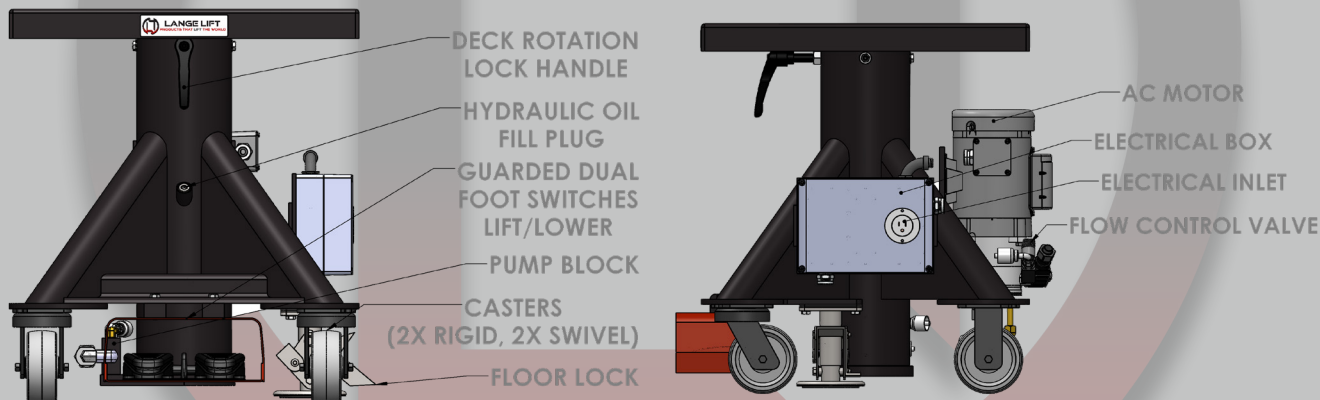
LOWERING: PUSH AND HOLD DOWN THE LOWER PEDAL SWITCH. THE LIFT TABLE WILL LOWER UNTIL THE DECK HAS REACHED ITS MINIMUM LOWERED HEIGHT OF 27" OR THE PEDAL IS RELEASED.

CAUTION! A LIFT TABLE UNDER LOAD WILL LOWER MORE QUICKLY. ALWAYS USE PROPER SAFETY PRECAUTIONS REQUIRED BY YOUR ENVIRONMENT AND ADJUST THE FLOW CONTROL ACCORDINGLY.

DECK ROTATION: LOOSEN THE LOCK HANDLE UNDER THE DECK AND ROTATE THE DECK 360° DEGREES IN EITHER DIRECTION AT ANY HEIGHT. TIGHTEN THE LOCK HANDLE TO LOCK IT IN PLACE. SOME MOVEMENT IS INTENDED TO PROTECT THE BEARING. **CAUTION!** DO NOT OVER-TIGHTEN. POSITION THE LOCK HANDLE ARM TOWARDS THE FLOOR TO PREVENT POSSIBLE DAMAGE.

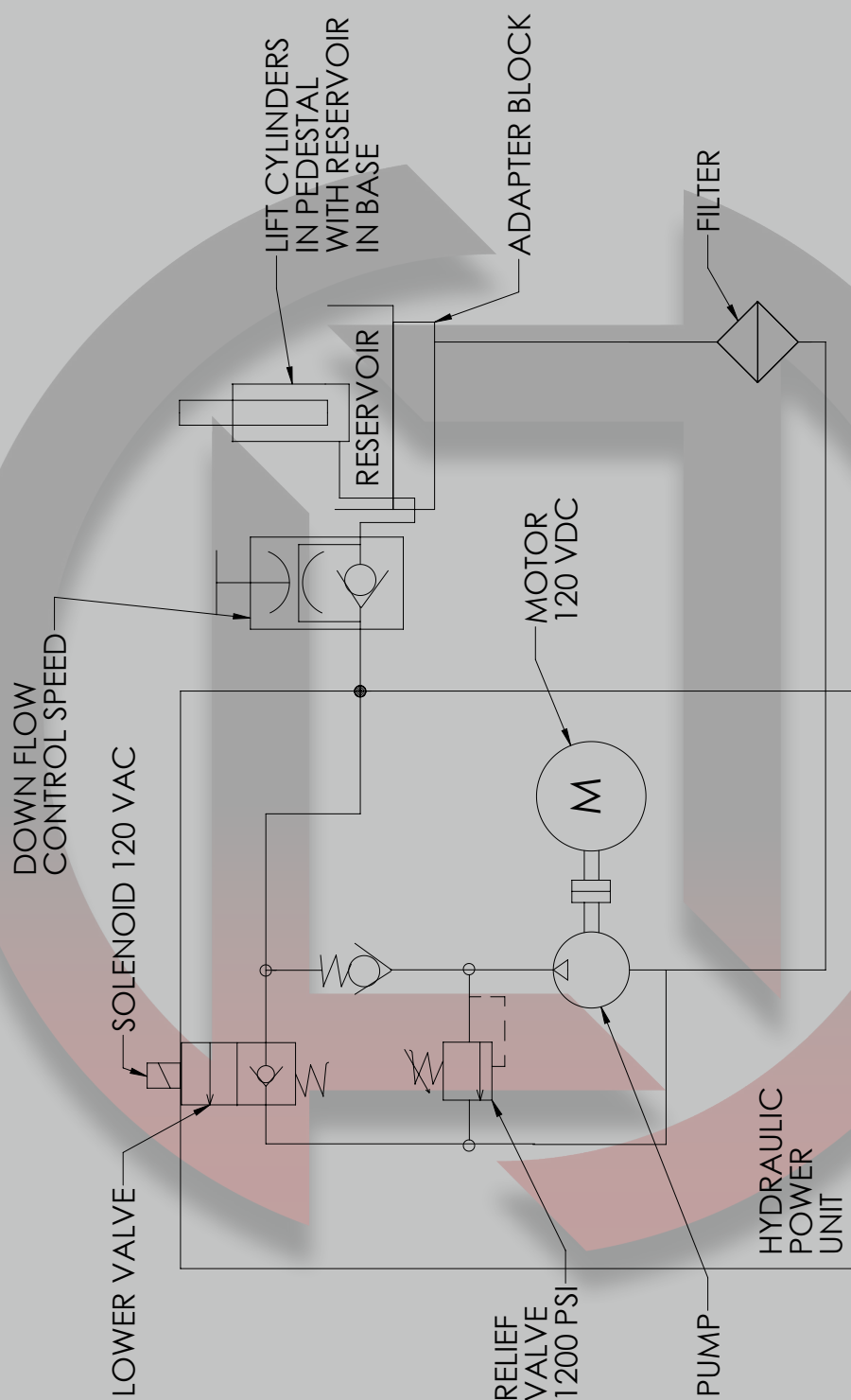
FLOOR LOCK: ENSURE THE TABLE IS ON A FLAT SURFACE AND FREE OF DEBRIS SO THE FLOOR LOCK CAN MAKE FULL CONTACT WITH THE FLOOR. USING YOUR FOOT, PUSH DOWN ON THE LARGE PEDAL UNTIL IT LOCKS. TO RELEASE, PRESS UP ON THE SMALL PEDAL UNTIL THE LARGE PEDAL SNAPS UP.

TABLE OPERATION





HYDRAULIC DIAGRAM



ELECTRIC POWERED LIFT TABLE - HYDRAULIC DIAGRAM v1

15

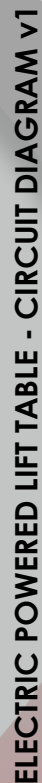
LANGE LIFT

PRODUCTS THAT LIFT THE WORLD





CIRCUIT DIAGRAM



16

LANGE LIFT

PRODUCTS THAT LIFT THE WORLD



