



LANGE LIFT

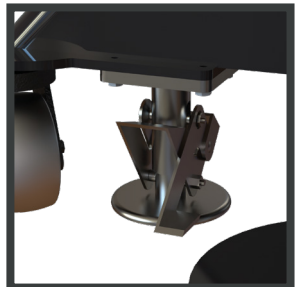
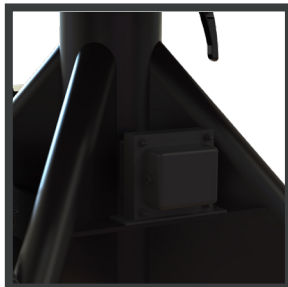
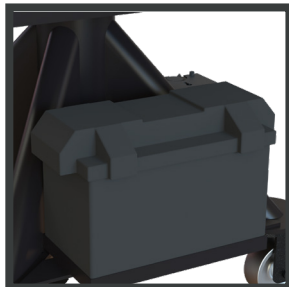
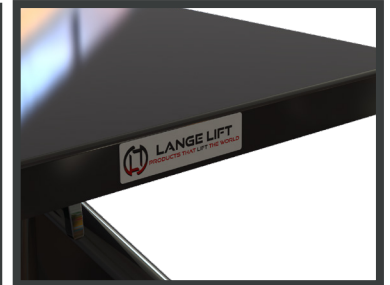
PRODUCTS THAT LIFT THE WORLD

MODEL: L-230-BP

2,000 LB. CAPACITY LIFT TABLE - 30" - BATTERY POWERED

TECHNICAL SPECIFICATIONS

CAPACITY: 2,000 LBS.
RAISED HEIGHT: 45"
LOWERED HEIGHT: 27"
VERTICAL TRAVEL: 18"
DECK: 30" SQUARE, 1/4" THICK, FORMED & WELDED STEEL, 360° CONTINUOUS WITH DECK ROTATION LOCK
BASE: 30" SQUARE, FORMED & WELDED STEEL LEGS, 2X CAST IRON SWIVEL CASTERS, 2X CAST IRON RIGID CASTERS, 1X INDUSTRIAL FOOT ACTUATED FLOOR LOCK
POWER: 12 VOLT DEEP CYCLE BATTERY (ENCLOSED), DC MOTOR, AND ON BOARD BATTERY CHARGER
CONTROLS: PUSH BUTTON COIL CORDED PENDANT - LIFT/LOWER
PAINT COLOR: LANGE LIFT SHADOW GRAY



CALL OR EMAIL FOR PRICING AND AVAILABILITY

WE SPECIALIZE IN CUSTOM LIFT SOLUTIONS

N90 W14555 COMMERCE DRIVE
PO BOX 580 (53052-0580)
MENOMONEE FALLS, WI 53051
UNITED STATES OF AMERICA

1 (262) 502-0333
1 (800) 558-0577
SALES@LANGELIFT.COM
WWW.LANGELIFT.COM

