

SPECIFICATION: CAPACITY: 4000 lbs.

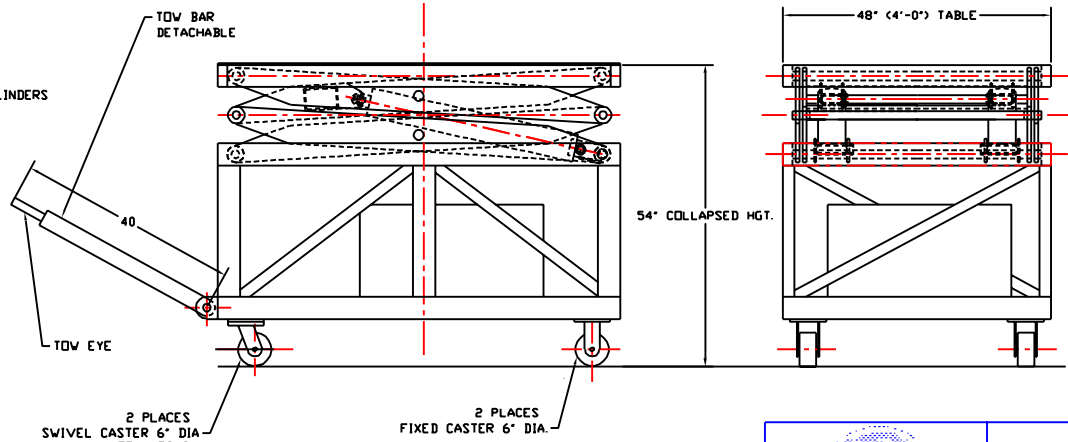
POWER: HYDRAULIC POWER UNIT 1.5 HP/ 110 VAC/ 60 HZ MOTOR
 COUPLED TO A HIGH PRESSURE GEAR TYPE HYDRAULIC PUMP
 UNIT HAS PRESSURE RELIEF VALVE, CHECK VALVE
 SOLENOID ACTUATED LOWERING VALVE
 OIL RESERVOIR WITH FLUID AND FILTRATION
 PRESSURE COMPENSATED FLOW CONTROL

NEMA 12 ENCLOSURE TO CONTAIN MAGNETIC MOTOR STARTER
 NEMA 12 SPRING RETRACT CORD REEL WITH 30 FT.
 GROUNDED POWER CORD AND PLUG

WHEELS: 6" DIA. - 2 SWIVEL W/ LOCKS AND 2 RIGID CASTERS
 TOW BAR: REMOVABLE

CONTROL: NEMA 4 MOMENTARY TYPE PUSH BUTTON STATION
 ON 10 FT. "KOILED CORD"
 UP TRAVEL LIMIT SWITCH
 SECONDARY MECHANICAL TRAVEL STOPS

PAINT: SAFETY YELLOW PAINT



120 VAC HYDRAULIC POWER UNIT AND CABLE REEL

	Menomonee Falls Wisconsin U.S.A. 800-558-0577
	DRAWN BY: J.P. WARREN CHECKED BY: DATE: SCALE: 1/10 PART NO: REF. SN 17315
TITLE: 4K SCISSORS LIFT	
REV.	DATE
DWG. NO: SN 21749	