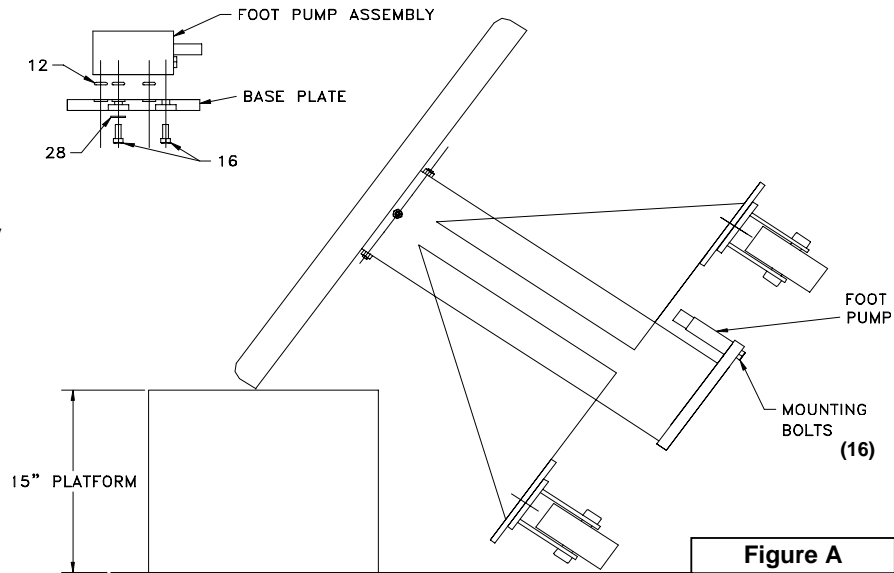


Foot Pump Rebuild Kit (FP-000-RK)

Installation Instructions

Removal of Foot Pump:

1. Completely lower table.
2. Lean lift table on a 15" platform as shown in Figure A (Recommend using a drop cloth or oil pan under table to catch any oil spillage).
3. Remove Mounting Bolts (16).
4. Remove Foot Pump Assembly.
5. Retain mounting bolts (16) for use in re-assembly. (Discard the three O-Rings (12) and Sealing Washer (28). New parts are supplied in Rebuild Kit).



Disassembly of Foot Pump:

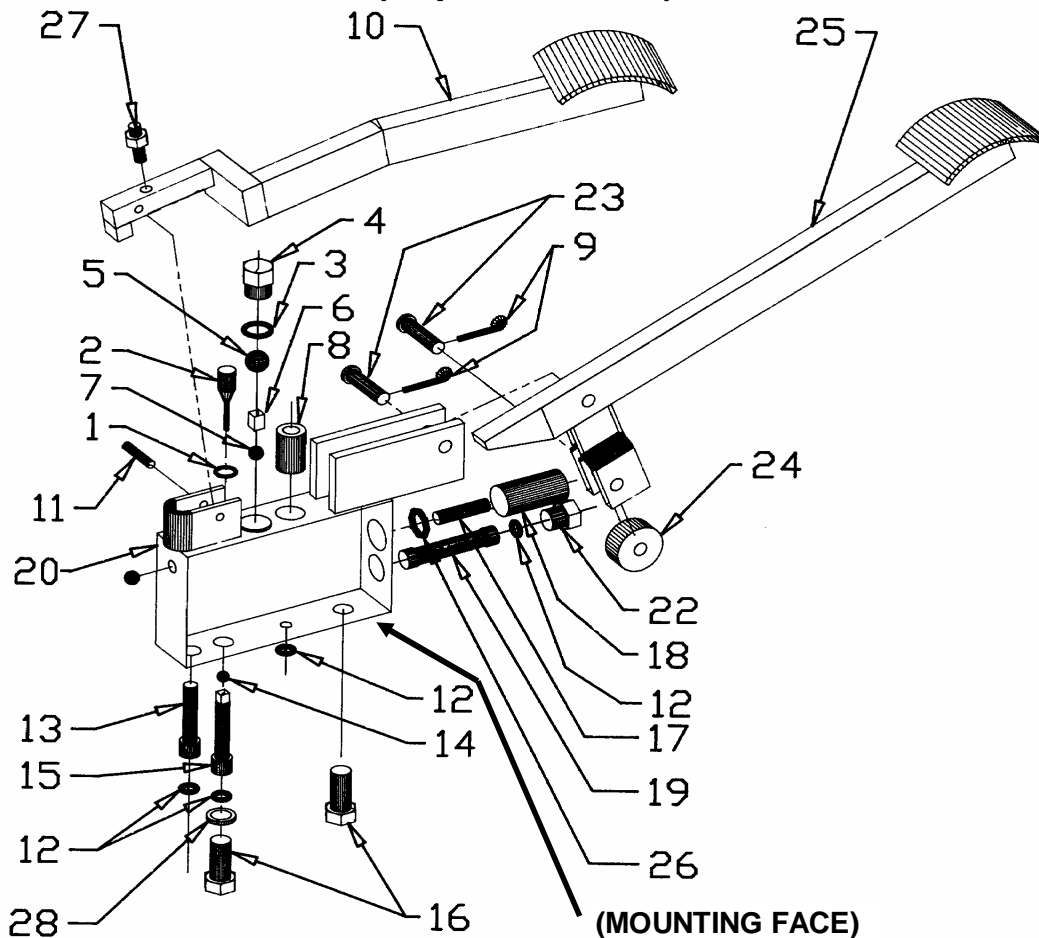
(Use "Foot Pump Assembly Exploded View" on page 3 for part numbers)

1. Clamp Foot Pump in a vice or secure Foot Pump with pedals (10) and (25) in the up position.
2. On Release Pedal (10), loosen Nut and Screw (27) and back out 3-4 turns.
3. Remove Roll Pin (11). Remove Release Pedal (10) and Spring (8).

Caution: Pump Pedal has spring pressure on it from the Pump Piston (18) and Spring (17). Care should be taken in removing Pump Pedal Clevis Pin (23). Restrain Pump Piston (18) to prevent sudden movement of Pedal Weldment (25) and Pump Piston (18).

4. Remove Cotter Pin (9) from Pump Pedal Clevis Pin (23). Remove Clevis Pin (23), see preceding caution, and remove Pump Pedal (25) allowing Pump Piston (18) to slowly extend from pump body.
5. Remove Piston (18) and Piston Return Spring (17) from Pump Body (20).
6. Remove Outlet Check Plug (4) and Inlet Screen Plug (22).
7. Remove Dump Pin (2) from Pump Body (20) (may need to use a pliers to grasp pin).
8. Remove Intake Screen (19) from body. Remove Pump Body from vice and invert to remove the Steel Ball (5), Steel Slug (6) and Steel Ball (7) from the Outlet Check Passage.
9. Remove O-Ring (1) from Dump Pin hole and O-Ring (26) from Pump Piston hole. (It is recommended that a seal pick be used to prevent damage to the Pump Body).
10. Mount Pump Body in vice with mounting surface in the up position.
11. Remove Outlet Screen (13) from the Pump Body. (Use an easy-out or tap to engage the screen and extract it from the Pump Body).
12. Unscrew and remove the Ball Pusher Assembly (15). Remove the Ball (14) by inverting the Pump Body and dumping the ball out.
13. Remove Cotter Pin (9) from Clevis Pin (23) and remove the Clevis Pin (23) from the Pedal Weldment (25) and Roller (24).

Foot Pump Assembly (Exploded View)



Re-assembly of Foot Pump:

1. Clamp Pump Body with mounting face up. Install Outlet Screen (13) into outlet cavity. Tap screen into hole to be flush with mounting face of Pump Body (20).
2. Drop 1/4" Ball (14) into Pump Body (Ball Pusher (15) Cavity).
3. Screw new Ball Pusher Assembly (15) into Pump Body. Screw Ball Pusher Assembly into Pump Body until it will no longer turn (do not over-tighten). **At this point, unscrew Ball Pusher Assembly 3/4 of a turn.**
4. Install new Inlet Screen (19) into Pump Body (see figure D). Screen collar must be inserted past the suction port.
5. Install new O-Ring (12) on Inlet Screen Plug (22). Tighten Inlet Screen Plug (22) into Pump Body.
6. Install new O-Ring (26) into O-Ring groove in Pump Body. Inspect installation to insure O-Ring is properly seated and not twisted.
7. Turn pump over and clamp in vise with mounting face down. Install O-Ring (1) into O-Ring groove. Inspect installation to insure O-Ring is properly seated and not twisted.
8. Apply a light coating of grease or oil to the Dump Pin (2) and install Dump Pin into Pump Body. Push down firmly on pin until it stops.
9. Drop 5/16" Ball (7), Steel Slug (6) and 1/2" Ball (5) into the Pump Body respectively.

10. Install new O-Ring (3) on Outlet Check Plug (4). Tighten Outlet Check Plug into Pump Body.
11. Place Roller (24) in Pump Pedal Weldment (25) and fasten with Clevis Pin (23) and Cotter Pin (9).
12. Apply a light coating of grease or oil to the Pump Piston (18), insert Piston Return Spring (17) into Piston. Insert Return Spring and Pump Piston into Pump Body. Push Pump Piston into Pump Body until about 2" of the Pump Piston is exposed from body. Apply side pressure to the Pump Piston to hold in place.

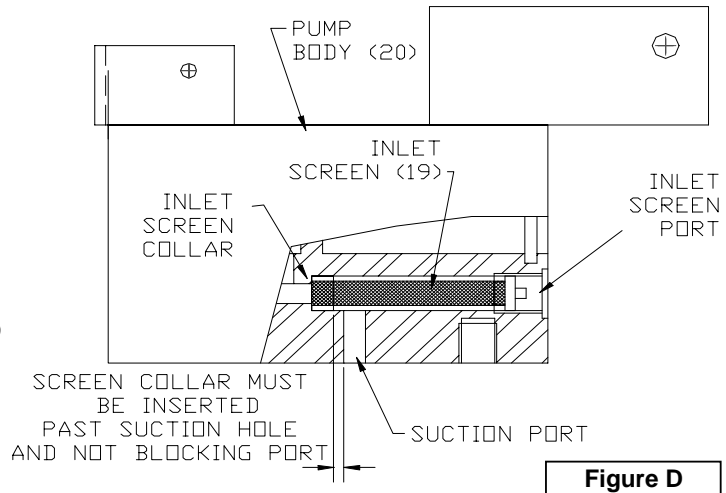


Figure D

13. Fasten Pump Pedal (25) to Pump Body with Clevis Pin (23) and Cotter Pin (9).
14. Operate Pump Pedal by hand to insure Pump Piston functions properly. Pump Pedal should return to normal operating position with the pressure from the Piston Return Spring.
15. Start Roll Pin (11) into Pump Body.
16. Place Release Lever Spring (8) onto Pump Body.
17. On Release Pedal Weldment (10), back off Set Screw and Nut (27) until flush. Install Release Pedal Weldment (10) onto Pump Body and drive Roll Pin (11) through Release Pedal Weldment.
18. Adjust Set Screw (27) as follows: back the Nut up to the end of Set Screw. Turn the Set Screw into the Release Pedal Weldment until it touches the Dump Pin. Fully depress Release Pedal Weldment by hand. Back Set Screw off 2 full turns and retighten screw until it touches Dump Pin then unscrew Set Screw 1/6 turn. Hold Set Screw in position with Allen Wrench and tighten nut without changing position of Set Screw. Check that the Set Screw is adjusted properly. The Set Screw should not be touching Dump Pin in its normal position and when the Release Pedal is depressed, the Dump Pin should move into Pump Body.

Replacement of Foot Pump:

1. Clean Base Plate (see Figure A).
2. Position O-Rings (12) in spot faced holes on Base Plate.
3. Position Foot Pump Assembly on Base Plate and install Mounting Bolts (16) and Sealing Washer (28).
4. Tighten bolts.
5. Replace lift table to proper lifting position.

Special Note: It may be necessary to prime rebuilt pump. To prime pump, depress Release Pedal (10) and manually lift table top 3-4 inches.

6. Operate lift to maximum height and pump an additional ten strokes to bleed air from the system.

*Add SAE or ISO-46 oil to lift if needed.

